

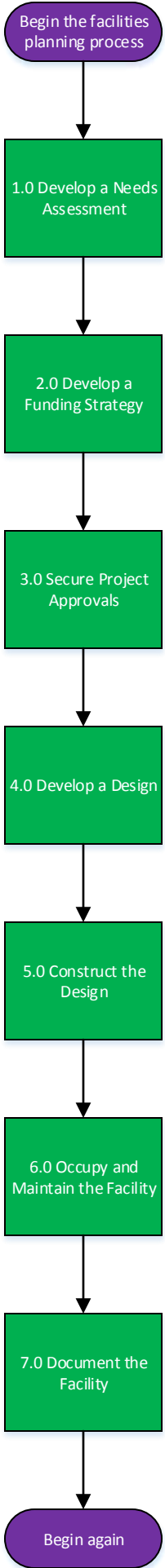
**A Process Map
For
Facilities Planning and Construction**

**Southeast Conference
Council of Educational Facility Planners
April 14-17, 2013**

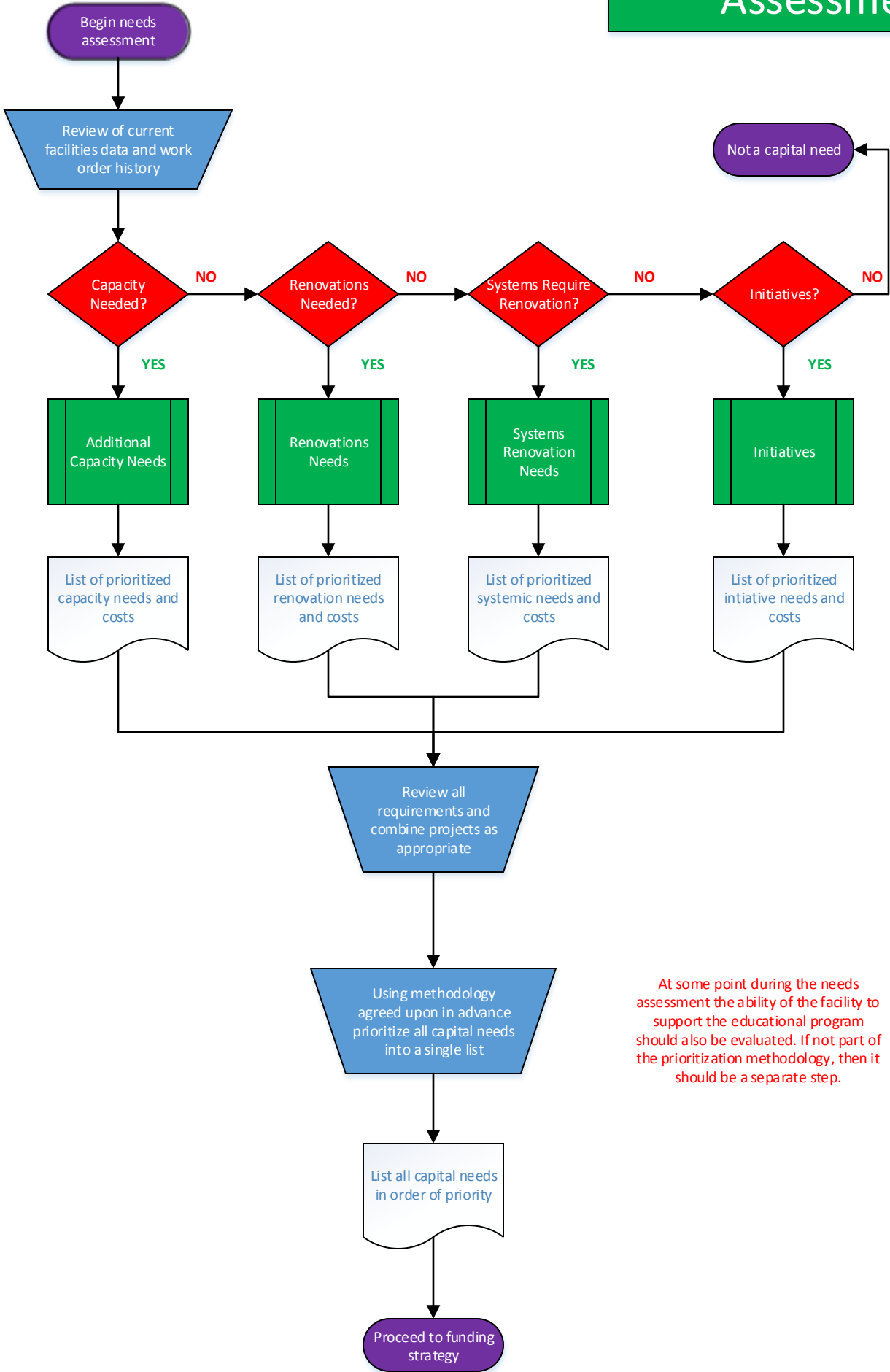
**Mike Raible
The School Solutions Group
704.999.0435**

**mkraible@gmail.com
<http://www.linkedin.com/pub/mike-raible/22/bb6/255/>
www.mkraible.wordpress.com**

A Facilities Planning and Construction Process Map

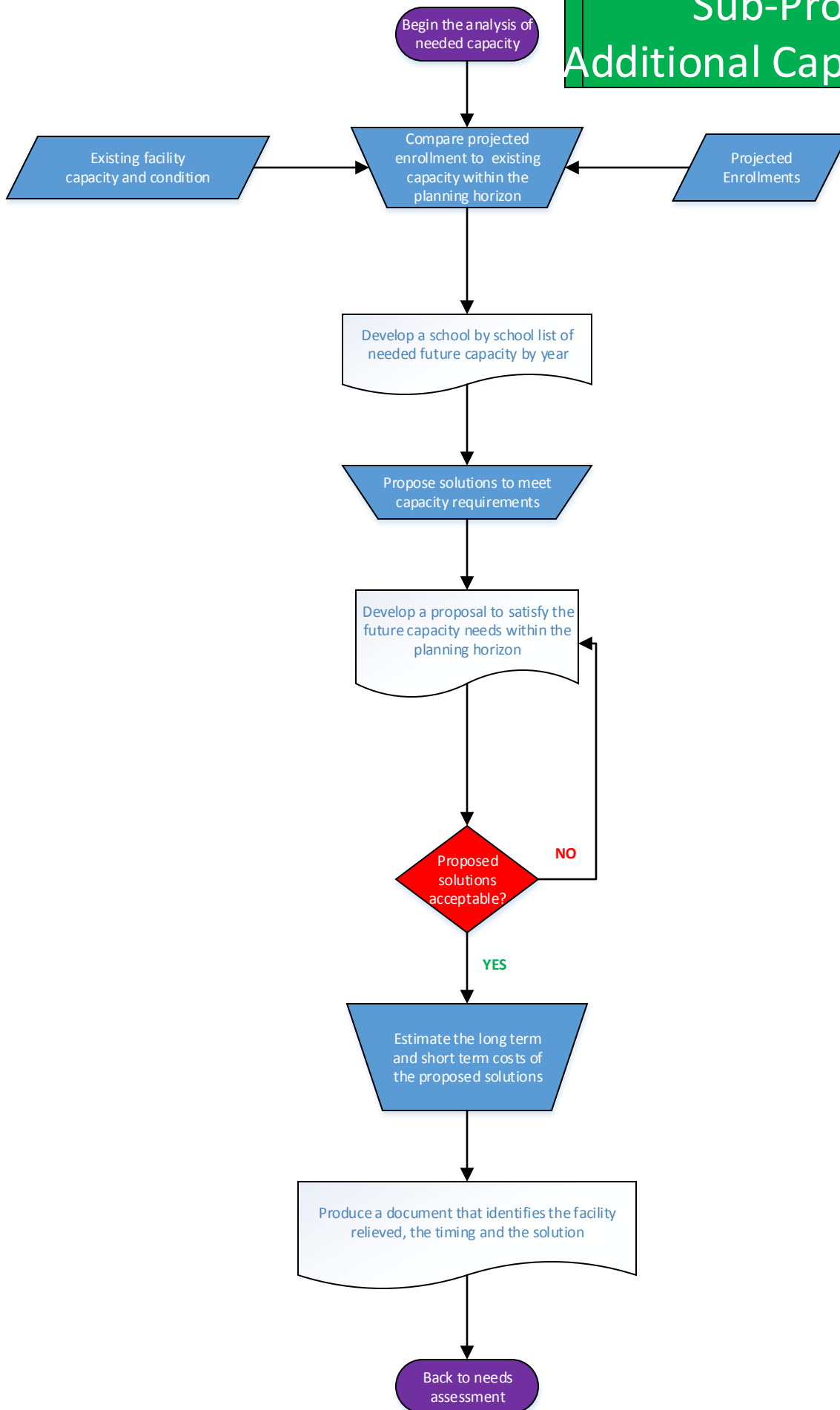


1.0 Develop a Needs Assessment

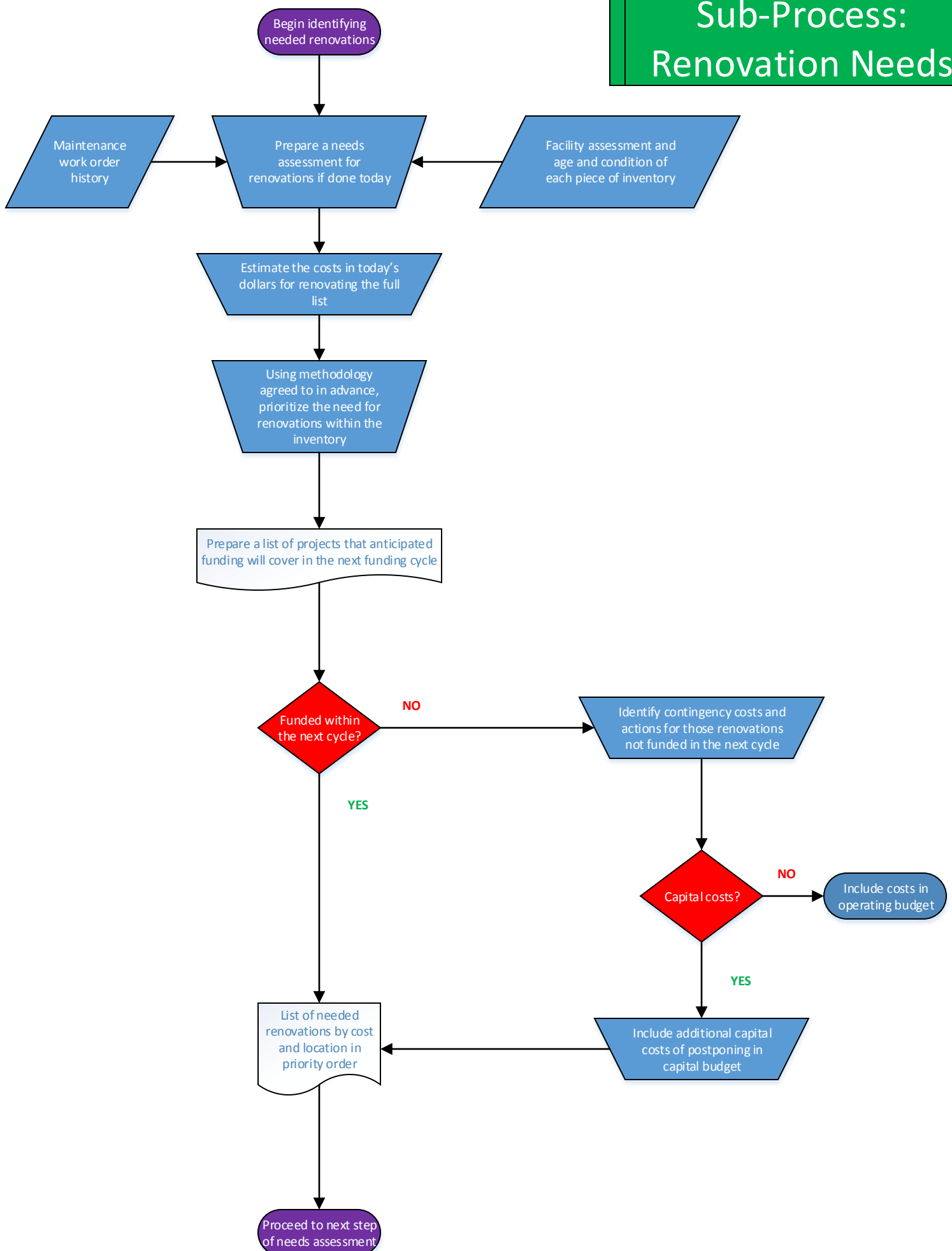


At some point during the needs assessment the ability of the facility to support the educational program should also be evaluated. If not part of the prioritization methodology, then it should be a separate step.

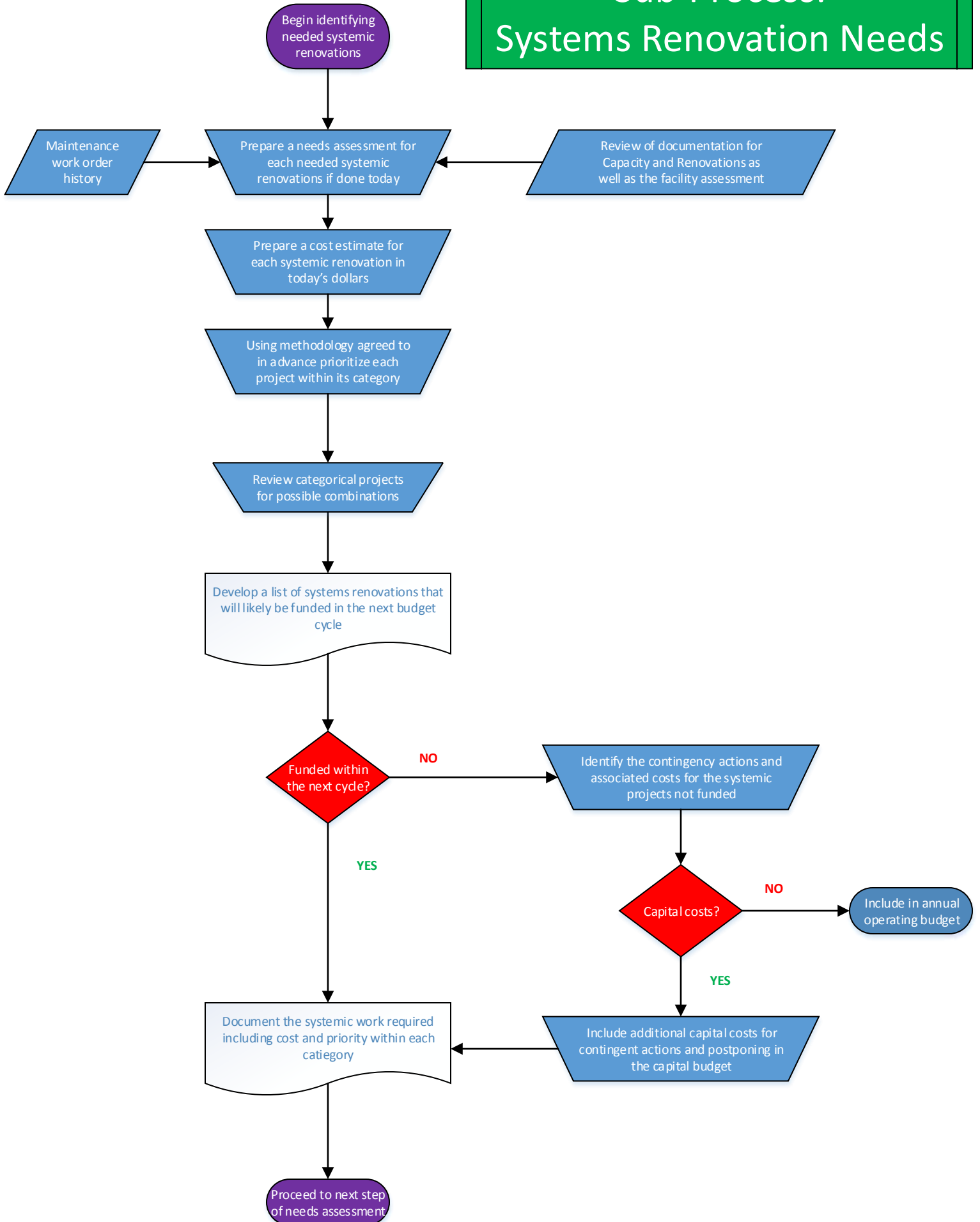
Sub-Process: Additional Capacity Needs



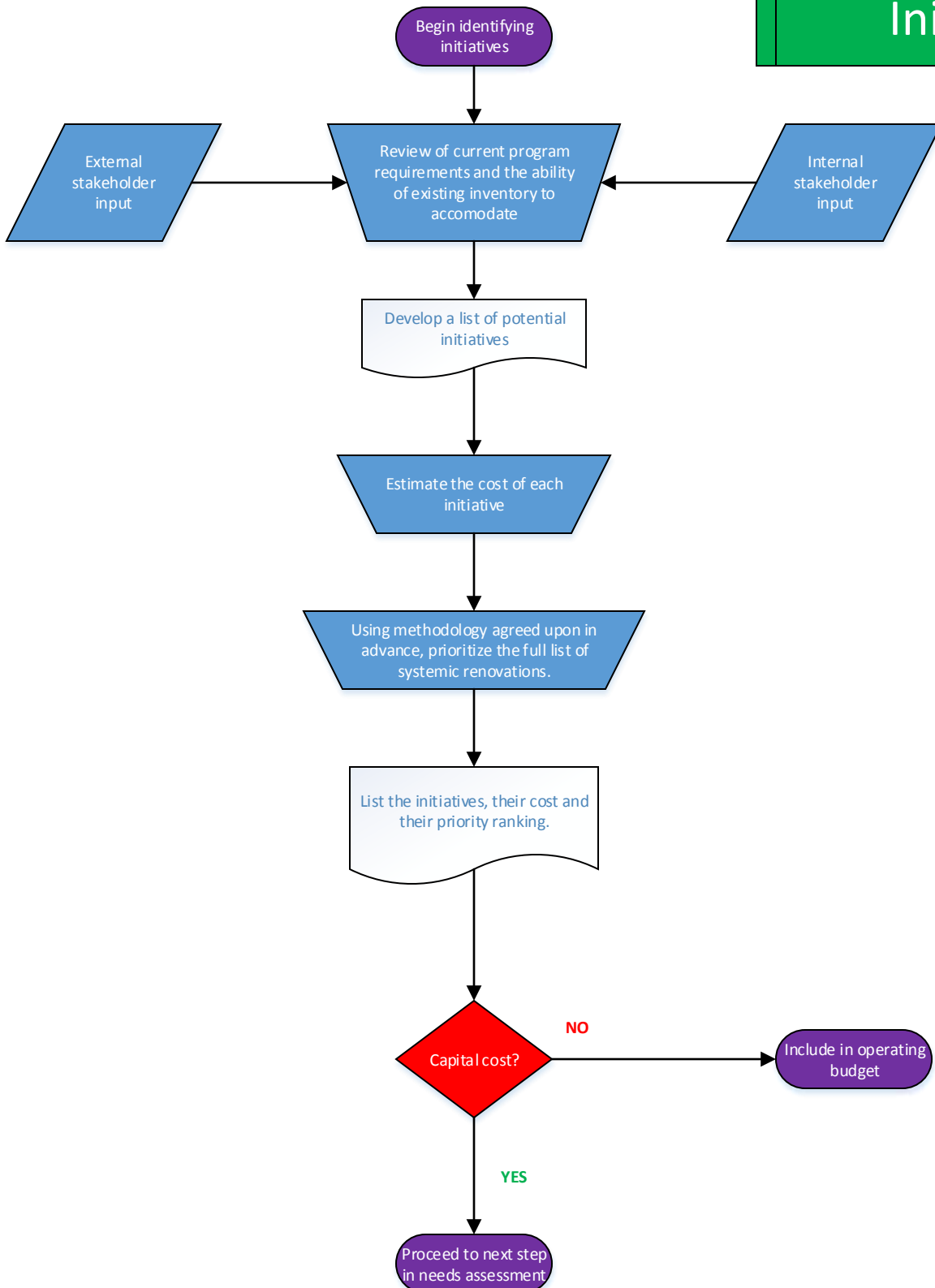
Sub-Process: Renovation Needs



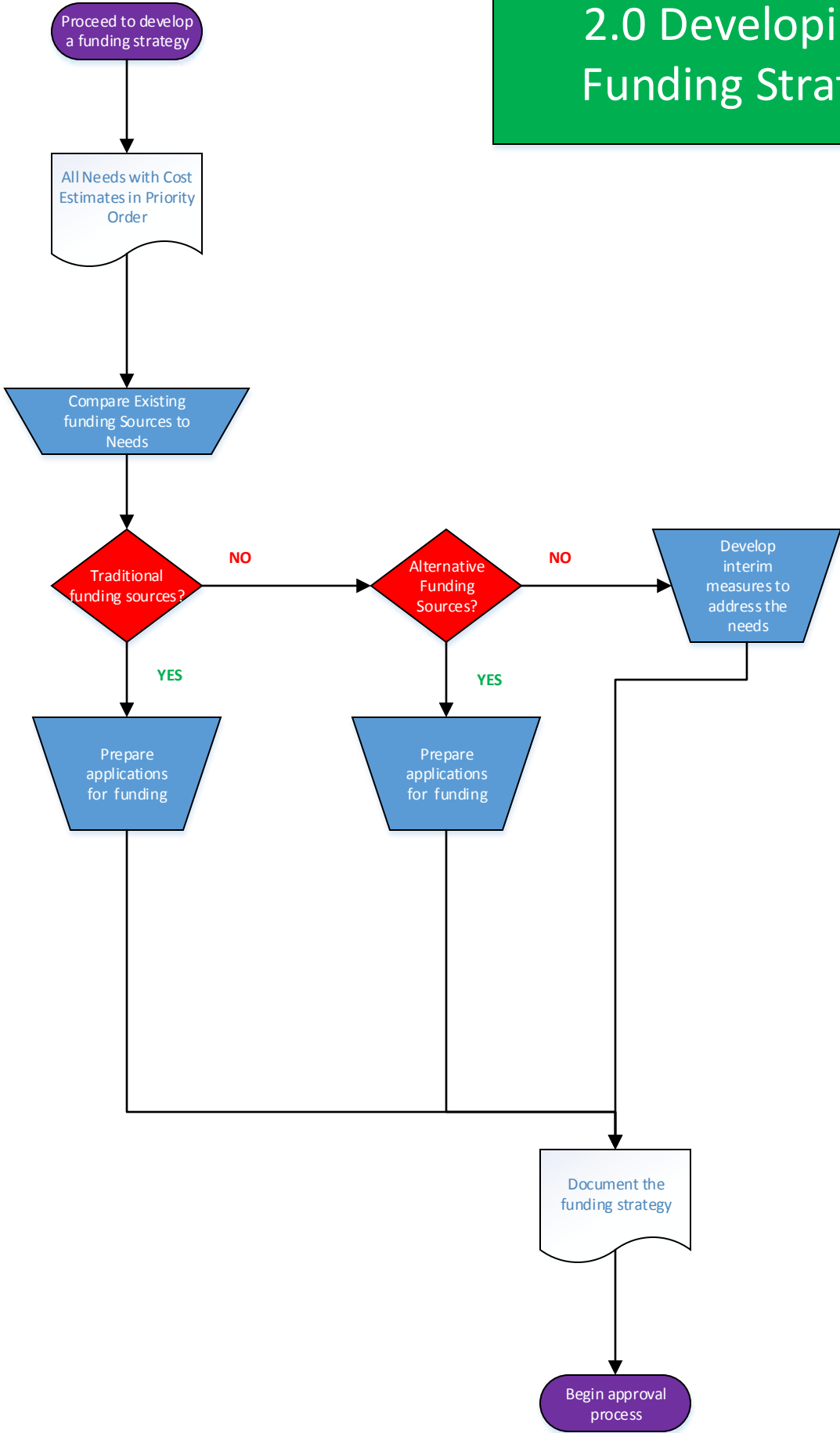
Sub-Process: Systems Renovation Needs



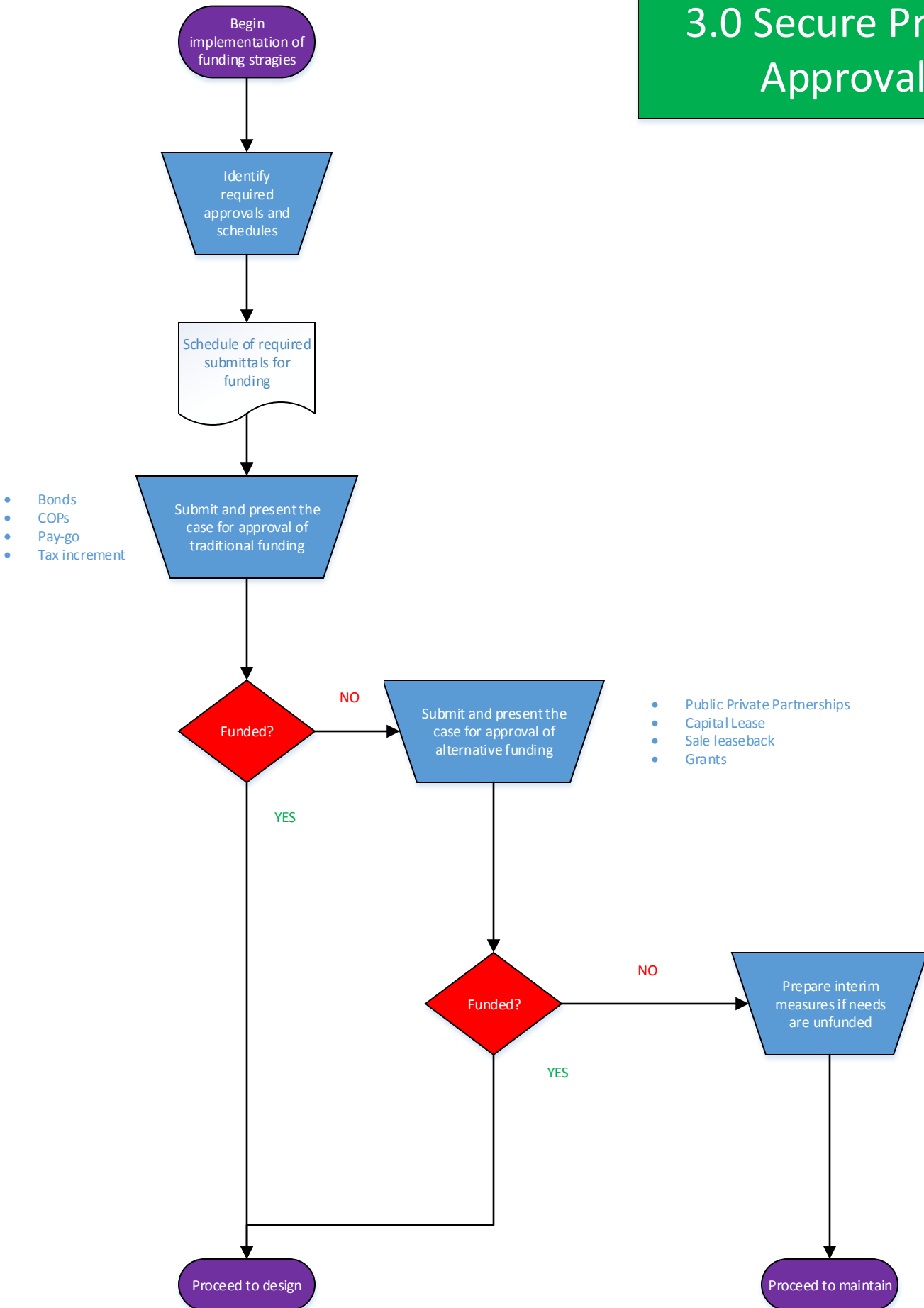
Sub-Process: Initiatives



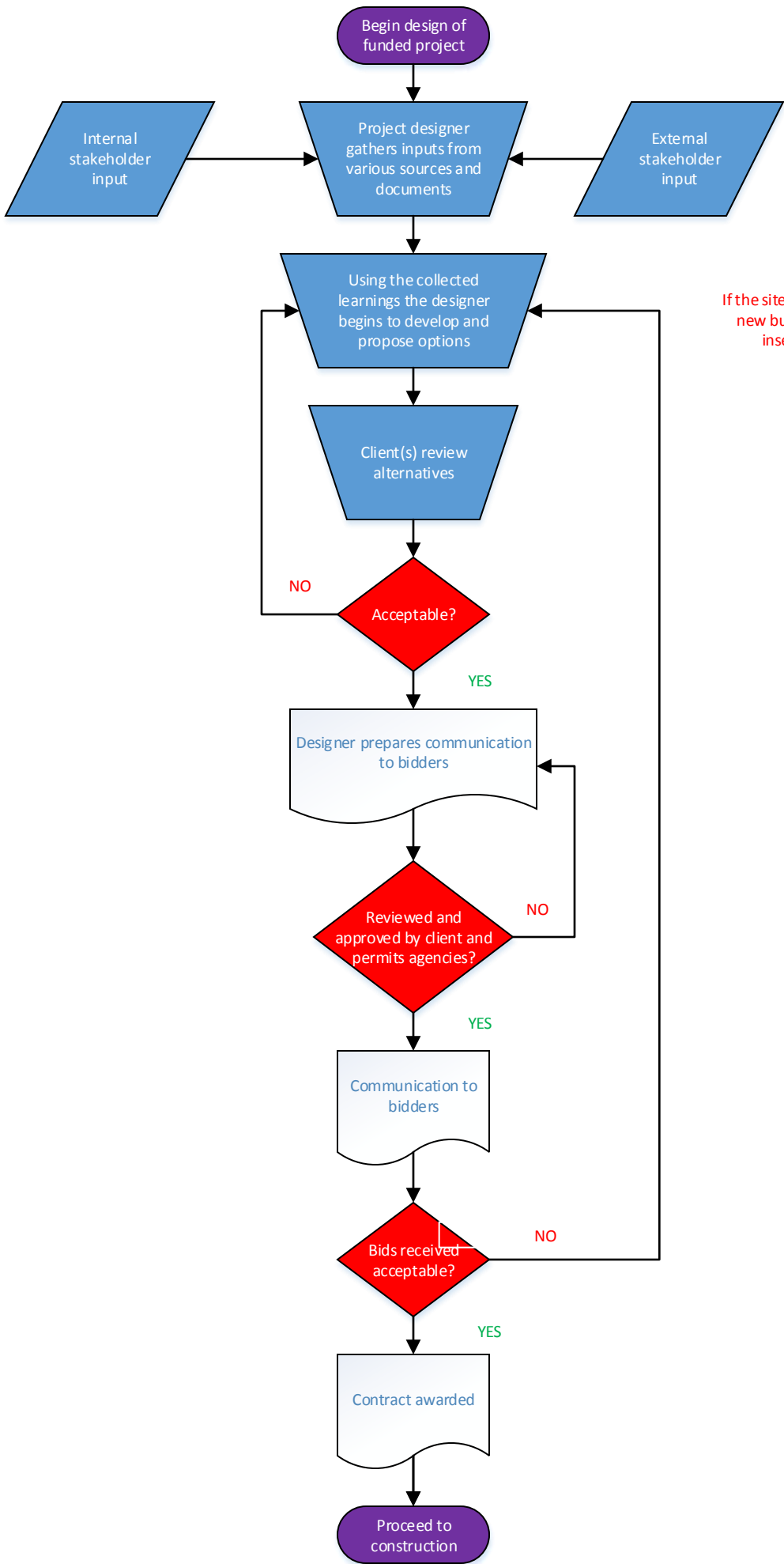
2.0 Developing a Funding Strategy



3.0 Secure Project Approvals

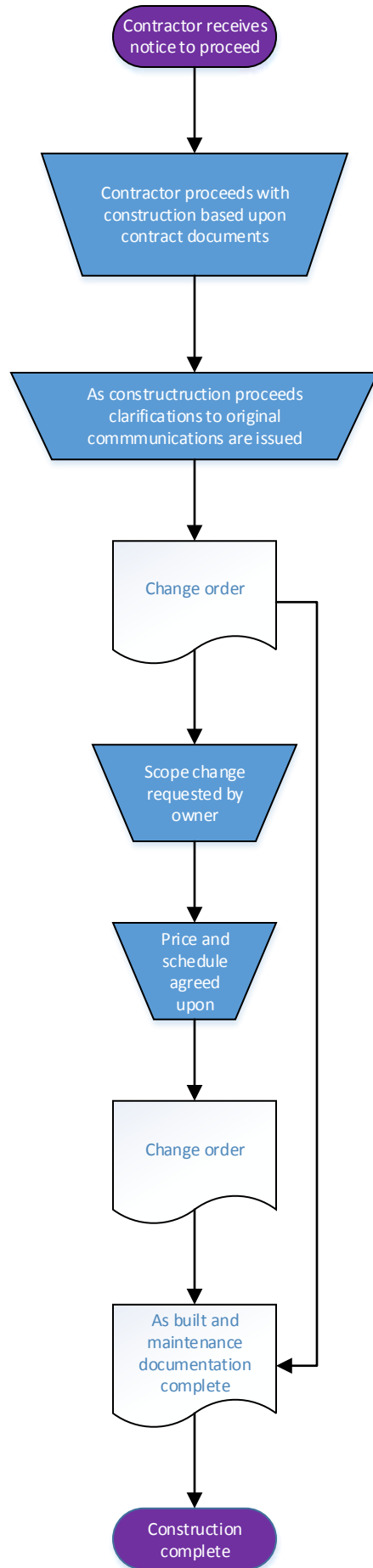


4.0 Develop the Design

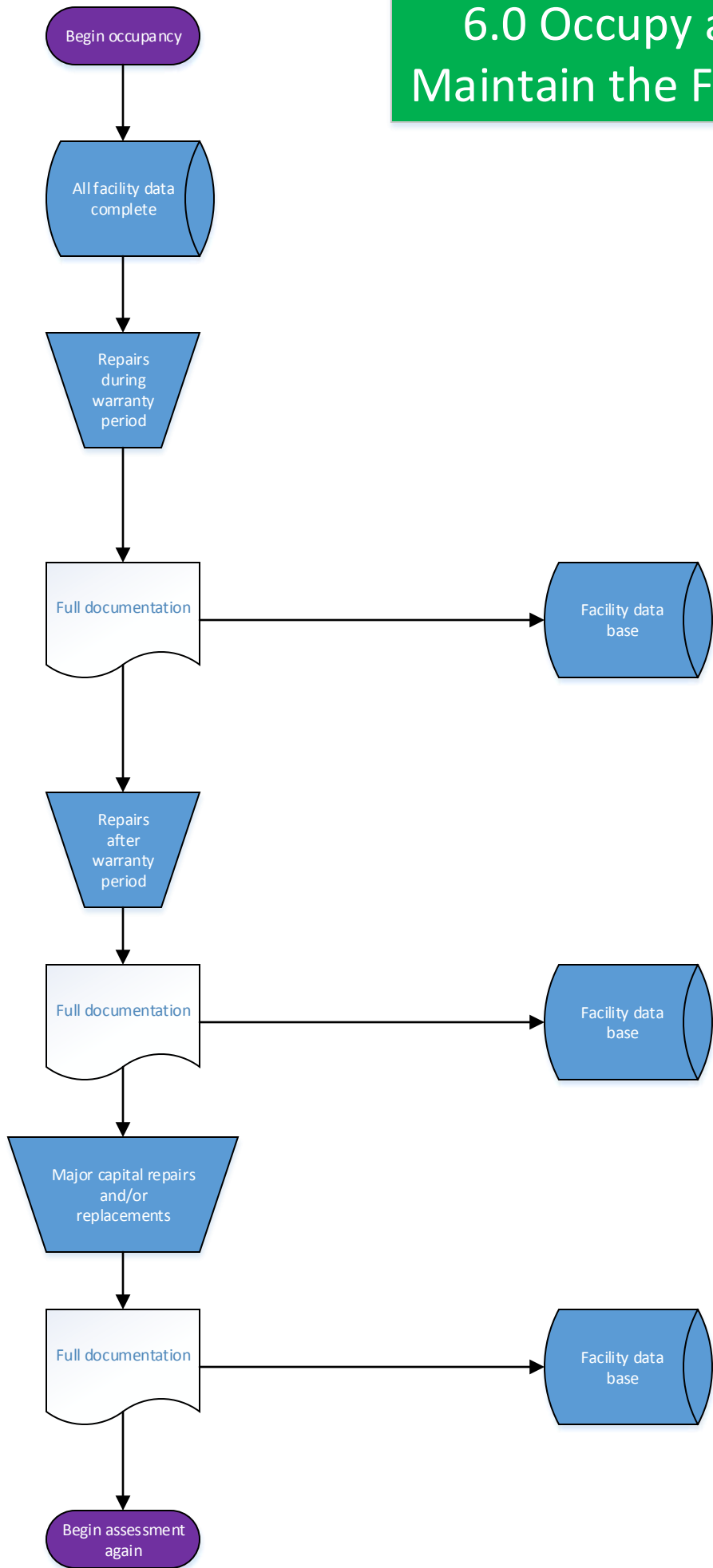


If the site has not been acquired for a new building, that step should be inserted into this process.

5.0 Construct the Design



6.0 Occupy and Maintain the Facility



7.0 Document the Facility

